

AFSA Chapter Officer Training

Module 2 AFSA Organizational Structure



AFSA Organizational Structure

Information located in:

- AFSA Manual (AFSAM) 100-1, Bylaws of the AFSA.
- AFSAM 100-2, Policy & Procedures of the AFSA.

NOTE: *Current manuals are available to download from the HQs website*



AFSA Organizational Structure:

- AFSA is comprised of two distinct elements; volunteers & paid staff.
- The International President is a volunteer and leads the Association.
- Paid staff man the HQs and are Association employees.
- Our staff is led by the AFSA Chief Executive Officer (CEO).
- CEO reports to the President and “works” for all AFSA Members.



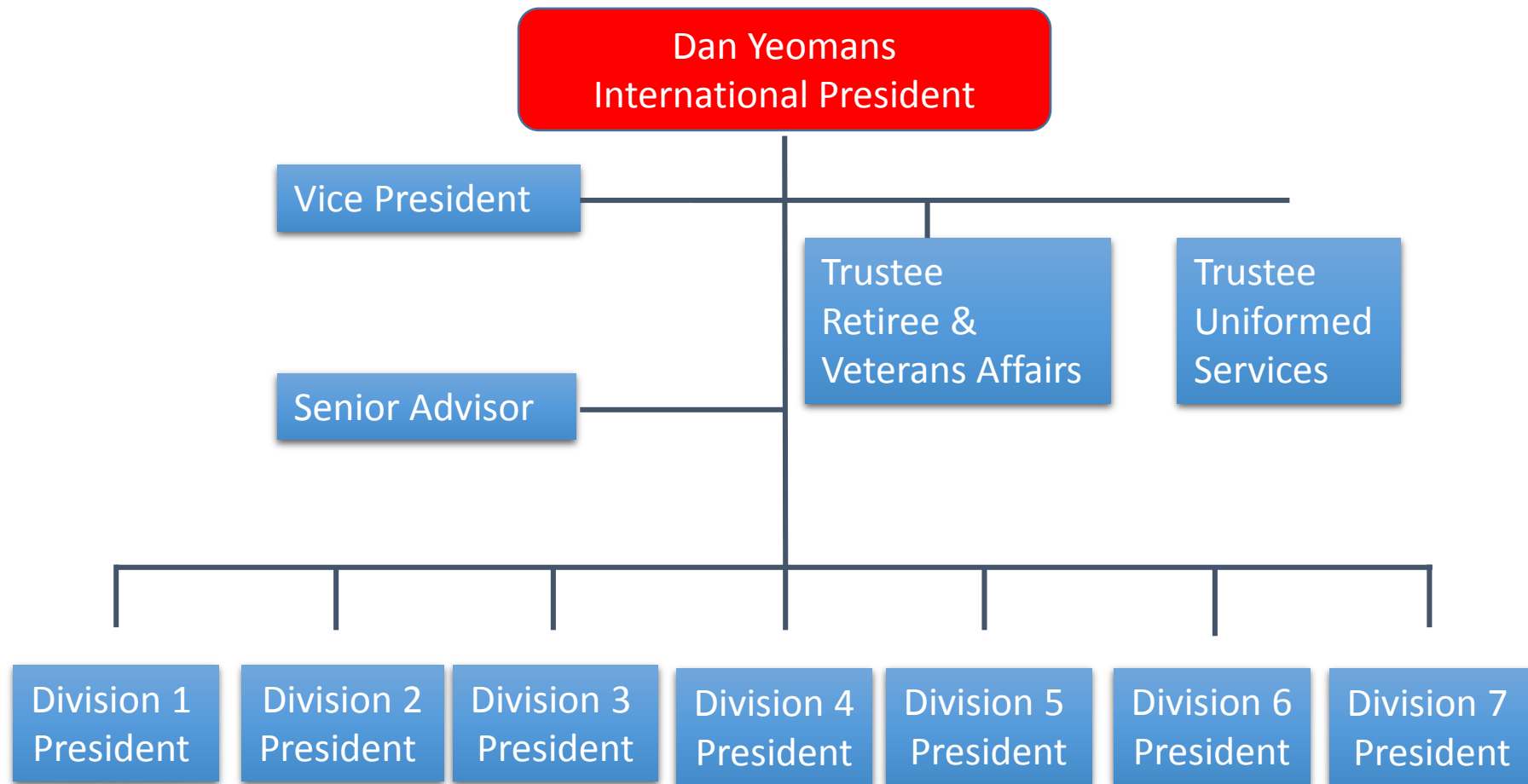
The AFSA International Executive Council (EC)

Comprised of the following:

- International President (an International Elected Officer)
- International Vice President (an International Elected Officer)
- Trustee for Uniform Services (an International Elected Officer)
- Trustee for Veterans and Retiree Affairs (an International Elected Officer)
- Senior Advisor (Appointed by President, and a past International President)
- 7 Division Presidents (Elected by their Division Members)

NOTE: *All officers are volunteers and may not be employees of the Association while they serve*





International Executive Council (Cont.)

- Governing body of AFSA; functions as “Board of Directors”.
- Supervises AFSA operations and determines AFSA policies.
- The International President is the (face) of AFSA.
- The International President presides over the Annual Convention and all Executive Council meetings.



AFSA Headquarters Staff

Comprised of the following:

- Chief Executive Officer (CEO)
- Chief Operating Officer (COO)
- Director, Support Operations/Staff
- Director, Member & Field Relations/Staff
- Director, Accounting & Finance/Staff
- Director, Military & Government Relations/Staff
- Director, Communications/Staff
- Executive Secretary
- IT Manager
- Human Resources (Outsourced)



NOTE: *Staff members are prohibited from being AFSA officers at any level while employed by the Association*



Dan Yeomans
International President

R. Frank
(CEO)

M.
Stevenson
(COO)

T. Young
(Exec Sec)

F. Killebrew *
(IT Mngr)

M. Leary
(HR)

M. Boston
(Dir, Spt Ops)

K. Reed*
(Dir, M&F)

J. Weems
(Dir, A&F)

M. Brown*
(Dir, M&G)

K. Reed
(Dir, Comm)



Summary

- The International Executive Council runs AFSA.
- The CEO and HQs staff work for all AFSA members and assists the Executive Council in AFSA's day-to-day operations.
- The International President is the Association's Leader and is the AFSA "Chairman of the Board".

